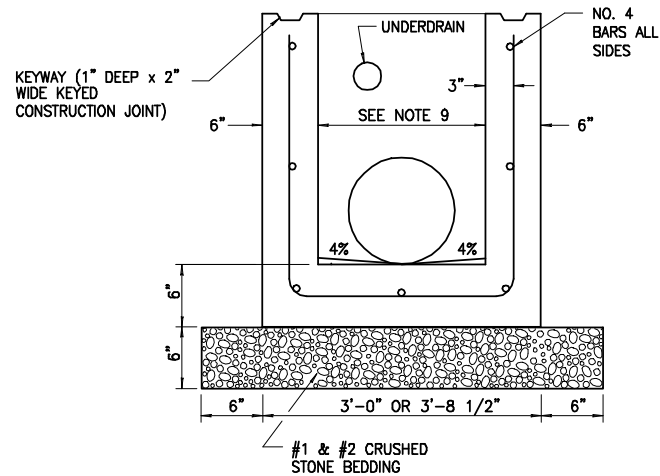


ELEVATION

- NOTES:
1. WELDED FRAME & RETICULINE GRATE No.11 - SEE N.Y.S.D.O.T. STANDARD SHEET.
 2. REINFORCEMENT SHALL HAVE A COVER OF 2" UNLESS OTHERWISE SHOWN. THE COST OF ALL BAR REINFORCEMENT SHALL BE INCLUDED IN THE PRICE BID FOR DROP INLETS.
 3. WHEN APPLICABLE EXTERIORS OF ALL DROP INLETS SHALL BE COATED WITH TWO COATS OF HIGH BUILD COAL TAR PAINT. AFTER INSTALLATION IS COMPLETE AND THE BENCH IS INSTALLED, THE INTERIOR OF ALL DROP INLETS SHALL BE COATED WITH TWO COATS OF EPOXY RESIN DAMP PROOFING.
 4. CLASS "A" CONCRETE IS TO BE USED. ALL PIPE CONNECTIONS SHALL BE MADE WITH 100% MORTAR.
 5. CLASS "A" CONCRETE BENCHES SHALL BE CAST-IN-PLACE ON ALL STORM DROP INLETS REGARDLESS OF PIPE DIAMETER. COST TO BE INCLUDED IN DROP INLET ITEM.
 6. REFER TO FRAME & GRATE ANCHOR DETAIL.
 7. STEPS WILL NOT BE ALLOWED.
 8. 2'-0" FOR < OR = 18" DIA. PIPE, 2'-8 1/2" FOR > 18" DIA. PIPE.

**DROP INLET NYSDOT TYPE "S"
CAST-IN-PLACE BASE**

NOT TO SCALE - REVISED: 06/12/23

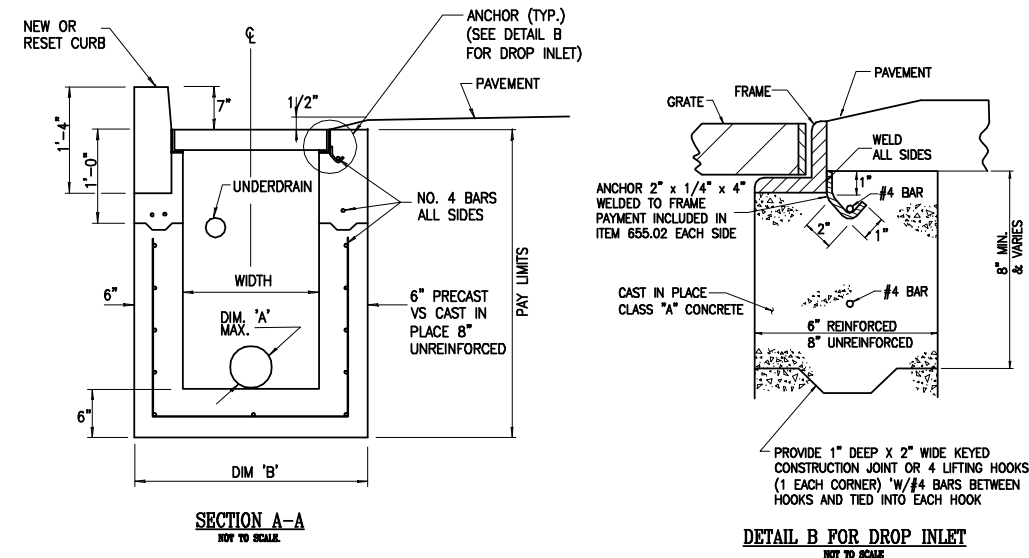


ELEVATION

- NOTES:
1. WELDED FRAME & RETICULINE GRATE No. 11 - SEE N.Y.S.D.O.T. STANDARD SHEET.
 2. REINFORCEMENT SHALL HAVE A COVER OF 2" UNLESS OTHERWISE SHOWN. THE COST OF ALL BAR REINFORCEMENT SHALL BE INCLUDED IN THE PRICE BID FOR DROP INLETS. ALL BAR REINFORCEMENT IN THE PRE CAST STRUCTURE SHALL BE ACCORDING TO NYSDOT STANDARD SHEET 604-5.
 3. ALL CONCRETE FOR DROP INLETS SHALL BE CLASS "A". BENCHES SHALL BE CAST-IN-PLACE COST TO BE INCLUDED IN DROP INLET ITEM.
 4. FILL WITH CEMENT MORTAR AND SEAL WITH ASPHALT EMULSION TACK COAT BETWEEN FRAME AND CURB. PAYMENT SHALL BE INCLUDED IN APPROPRIATE CURB ITEM.
 5. EXTERIORS OF ALL DROP INLETS TO BE COATED WITH TWO COATS OF HIGH BUILD COAL TAR PAINT. AFTER INSTALLATION IS COMPLETE AND THE BENCH IS INSTALLED, THE INTERIOR OF ALL DROP INLETS SHALL BE COATED WITH TWO COATS OF EPOXY RESIN DAMP PROOFING.
 6. ALL PIPE CONNECTION TO STRUCTURE SHALL BE SEALED WITH 100% MORTAR.
 7. REFER TO FRAME AND GRATE ANCHOR DETAIL.
 8. STEPS WILL NOT BE ALLOWED.
 9. 2'-0" FOR < OR = 18" DIA. PIPE, 2'-8 1/2" FOR > 18" DIA. PIPE.

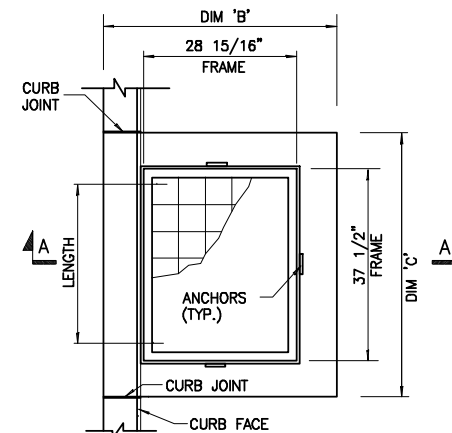
DROP INLET NYSDOT TYPE "S" PRECAST BASE

NOT TO SCALE - REVISED: 06/12/23



**SECTION A-A
NOT TO SCALE**

**DETAIL B FOR DROP INLET
NOT TO SCALE**



**PLAN
1/2\"/>**

TYPE	ITEM NUMBER	WIDTH	LENGTH	DIM 'A'	DIM 'B'	DIM 'C'
C	604.50XXYY	36"	36"	30" MAX	48"	48"

DROP INLET TYPE 'C' (AGAINST CURB) PRECAST

NOT TO SCALE - REVISED: 06/12/23

- NOTES:
1. ITEM 655.02 - FRAME AND GRATE #11
FRAME: 28 15/16" X 37 1/2"
GRATE: 27 11/16" X 36 1/2"
RECTANGULAR FRAME AND GRATE ASSEMBLY
REFER TO NYSDOT STANDARD SHEET 655-6
PAYMENT AREA = 7.2 sqft.
 2. THE COST OF ALL BAR REINFORCEMENT SHALL BE INCLUDED IN THE BID PRICE FOR DROP INLETS. BAR REINFORCEMENT SHALL HAVE A COVER OF 2" UNLESS OTHERWISE SHOWN.
 3. ALL CONCRETE FOR DROP INLETS SHALL BE CLASS "A".
 4. FILL WITH CEMENT MORTAR AND SEAL WITH ASPHALT EMULSION TACK COAT BETWEEN FRAME AND CURB. PAYMENT SHALL BE INCLUDED IN THE APPROPRIATE CURB ITEM.
 5. THE INTERIOR AND EXTERIOR OF ALL DROP INLETS SHALL BE COATED WITH TWO COATS OF KOPPERS SUPER SERVICE BLACK OR APPROVED EQUAL.
 6. STEPS ARE REQUIRED FOR ANY STRUCTURE DEEPER THAN 4'-0" AND SHALL CONFORM TO MATERIAL SPECIFICATION 725-02. THE COST OF THE STEPS SHALL BE INCLUDED IN THE BID PRICE FOR DROP INLETS.
 7. BASE AND WALL THICKNESS WILL BE 8" IF UNREINFORCED CAST-IN-PLACE.
 8. CONCRETE SHALL NOT BE USED TO RESTORE PAVEMENT AROUND NEW OR ADJUSTED FRAMES AND COVERS. CONTRACTOR SHALL SAW-CUT A NEAT CLEAN LINE AROUND THE COVER, PLACE ASPHALT & SEAL SEAM WITH NYSDOT APPROVED CRACK FILL.

NO.	DATE	BY:	REVISION

CONSULTANT
 Consultant Address: (585) 867-5309
 Rochester, New York XXXX
 Fax: (585) 867-5309

PROJECT MANAGER: MANAGER
DRAWN BY: DRAFTER

DEPARTMENT OF TRANSPORTATION
 50 WEST MAIN STREET, SUITE 6100
 ROCHESTER, NEW YORK 14614-1231
UNAUTHORIZED ALTERATION OR ADDITION TO THIS DRAWING
 VIOLATES NEW YORK STATE EDUCATION LAW
 ARTICLE 145, SECTION 2209

COUNTY ROAD #	
PROJECT NAME	
PROJECT LIMITS	
TOWN	
CAPITAL PROJECT NO.	XXXX-XX